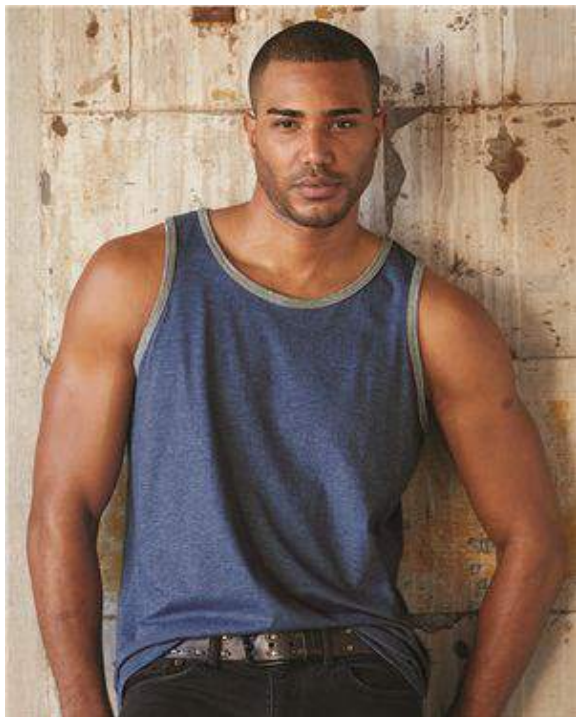


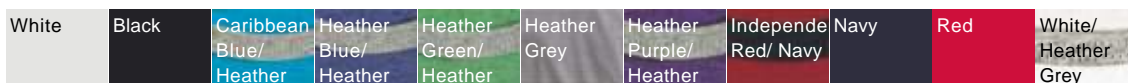
Anvil - Lightweight Fashion Tank - 986

ANVIL®



- 4.5 oz., 100% pre-shrunk combed ringspun cotton, 32 singles
- Double-needle stitching on bottom hem
- Bound self-collar and armholes
- Tubular construction
- TearAway™ label
- Heather Grey is 90/10 cotton/polyester
- Heather Colors are 35/65 cotton/polyester

Colors



Finished Measurements

	S	M	L	XL	2XL
Body Length	28	29	30	31	32
Body Length Tolerance	1	1	1	1	1
Body Width	18	20	22	24	26
Body Width Tolerance	3/4	3/4	3/4	3/4	3/4